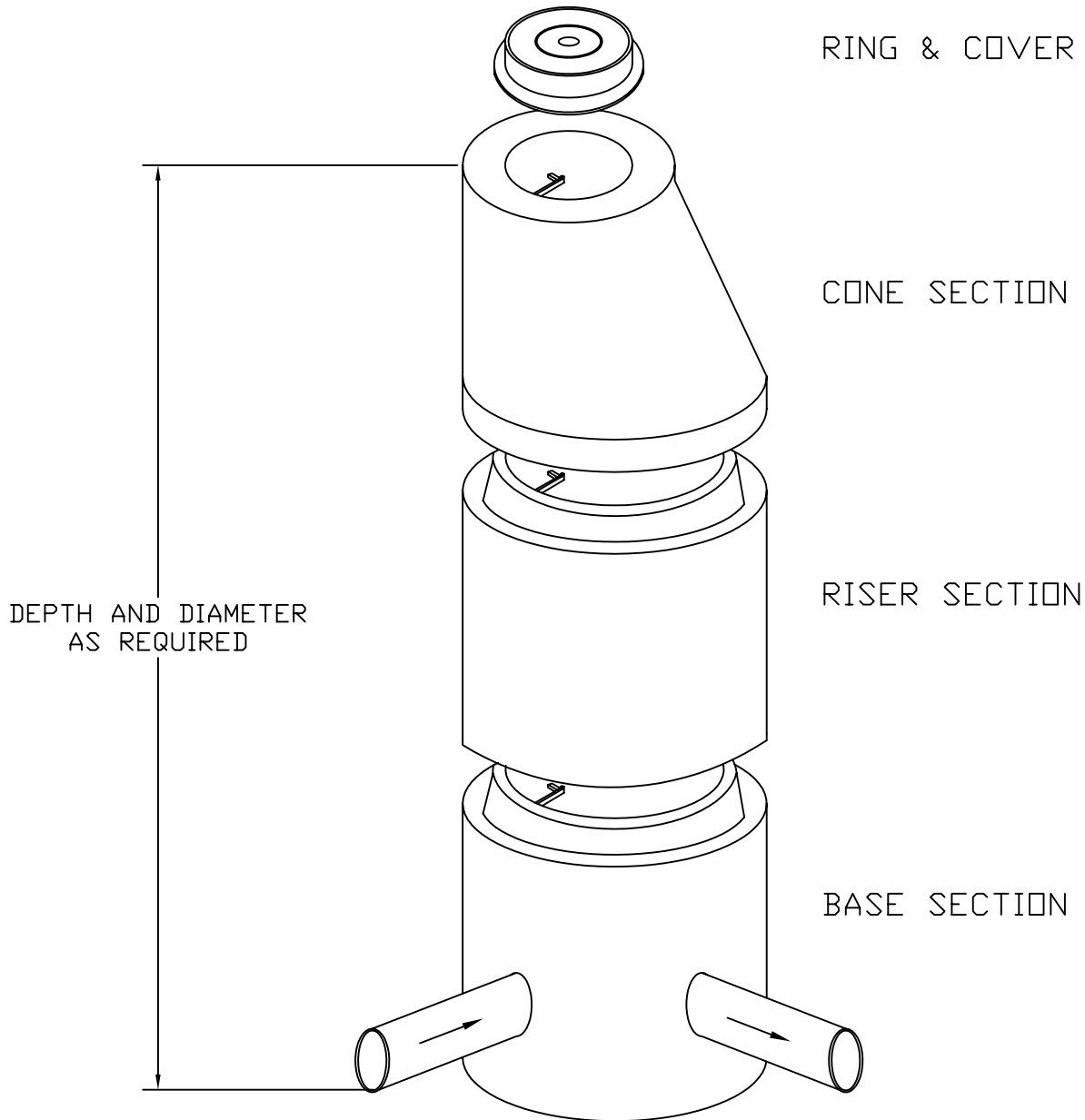


SANITARY SEWER MANHOLES



- *MANHOLE DESIGN TO MEET ASTM C-478.
- *REINFORCEMENT TO MEET ASTM
ASTM A-185 AND A-615(BAR).
- *MINIMUM 4000 psi CONCRETE.
- *PIPE OPENING AS REQUIRED OR FLEXIBLE
BOOT CONNECTOR.
- *PRECAST INVERT TROUGH AS REQUIRED.